

ELASTIC LACES

TOUCH COLOR

FULL GRAIN LEATHER

TOUCH COLOR HOOKS

FULL GRAIN LEATHER

# BRIXIA

FALL/WINTER COLLECTION  
**2026/2027**

LINING FULL GRAIN LEATHER

HOOKS

PRINT  
48R



COL

HOOKS

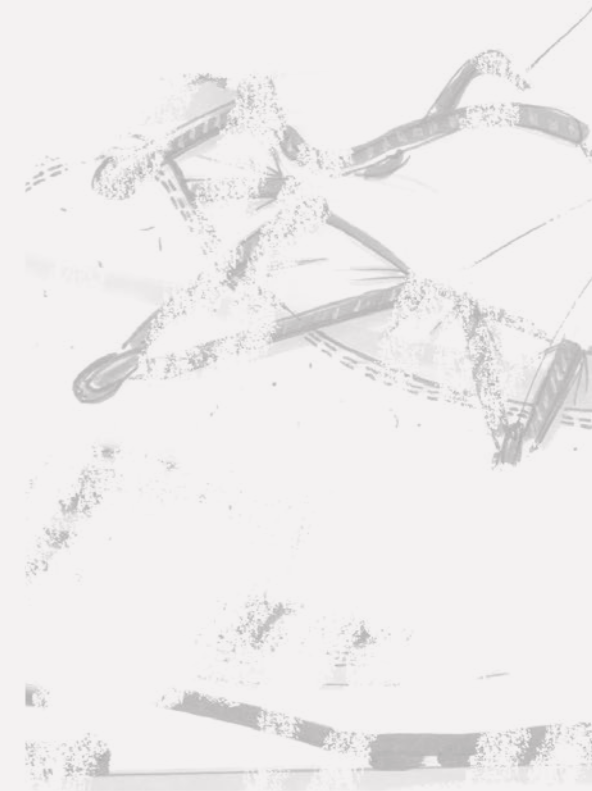
SUEDE/SUBUK?

PLASTIC/VINYL LAYER



# BRIXIA

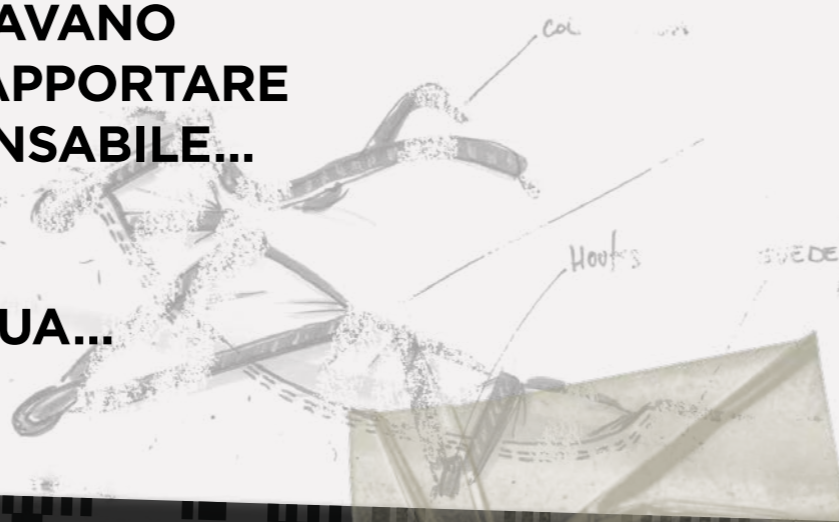
FALL/WINTER COLLECTION  
**2026/2027**





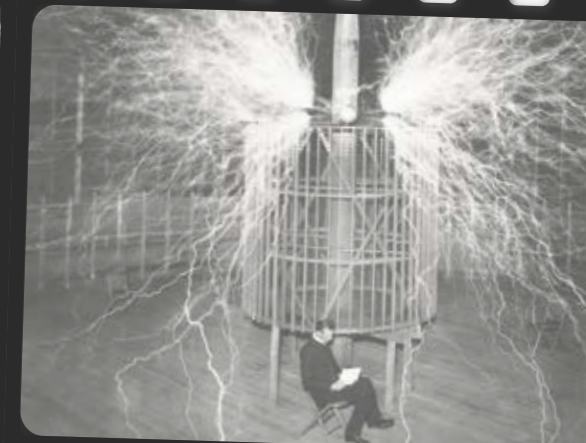
**QUANDO TUTTI PENSAVANO  
CHE FOSSE IMPOSSIBILE APPORTARE  
UN CAMBIAMENTO IMPENSABILE...  
È SUCCESSO.**

**LA STORIA CONTINUA...**



**WHEN EVERYONE THOUGHT  
IT WAS IMPOSSIBLE TO BRING ABOUT  
AN UNTHINKABLE CHANGE...  
IT HAPPENED.**

**THE STORY CONTINUES...**





#MOD 1  
**ALL SEASON**



**ALL SEASON VELVET / LIGHT BEIGE AZURE**  
CODE\_ 010526100

**TOMAIA/UPPER** VELVET+SUEDE

**FODERA/LINING** MESH

**SUOLA/SOLE** EVA+RUBBER



**ALL SEASON VELVET / BURGUNDY OLIVE GREEN**  
CODE\_ 010526105

**TOMAIA/UPPER** VELVET+SUEDE

**FODERA/LINING** MESH

**SUOLA/SOLE** EVA+RUBBER





**ALL SEASON VELVET / LIGHT BEIGE PINK**  
CODE\_ 010526110

**TOMAIA/UPPER** VELVET+SUEDE

**FODERA/LINING** MESH

**SUOLA/SOLE** EVA+RUBBER



**ALL SEASON VELVET / LIGHT BEIGE OFF WHITE**  
CODE\_ 010526115

**TOMAIA/UPPER** VELVET+SUEDE

**FODERA/LINING** MESH

**SUOLA/SOLE** EVA+RUBBER





**ALL SEASON VELVET / OLIVE GREEN SAGE GREEN**  
CODE\_ 010526120

**TOMAIA/UPPER** VELVET+SUEDE

**FODERA/LINING** MESH

**SUOLA/SOLE** EVA+RUBBER





#MOD 2  
**DIABLO**



**DIABLO / LIGHT BEIGE BLACK**  
CODE\_ 010526125

**TOMAIA/UPPER** SOFT REGENERATED LEATHER+SUEDE

**FODERA/LINING** MESH

**SUOLA/SOLE** EVA+RUBBER



**DIABLO / LIGHT BEIGE BURGUNDY**  
CODE\_ 010526130

**TOMAIA/UPPER** SOFT REGENERATED LEATHER+SUEDE

**FODERA/LINING** MESH

**SUOLA/SOLE** EVA+RUBBER





**DIABLO / OFF WHITE LIGHT BEIGE**

CODE\_ 010526135

**TOMAIA/UPPER** SOFT REGENERATED LEATHER+SUEDE

**FODERA/LINING** MESH

**SUOLA/SOLE** EVA+RUBBER



**DIABLO / SAND BLACK**

CODE\_ 010526140

**TOMAIA/UPPER** SOFT REGENERATED LEATHER+SUEDE

**FODERA/LINING** MESH

**SUOLA/SOLE** EVA+RUBBER





**DIABLO / OLIVE GREEN SAGE GREEN**  
CODE\_ 010526145

**TOMAIA/UPPER** SOFT REGENERATED LEATHER+SUEDE

**FODERA/LINING** MESH

**SUOLA/SOLE** EVA+RUBBER





#MOD 3

MUSA 2.0



**MUSA 2.0 VELVET / OLIVE GREEN SAGE GREEN**  
CODE\_ 010526150

**TOMAIA/UPPER** VELVET  
**FODERA/LINING** MESH  
**SUOLA/SOLE** EVA+RUBBER



**MUSA 2.0 VELVET / PINK LIGHT BEIGE**  
CODE\_ 010526155

**TOMAIA/UPPER** VELVET  
**FODERA/LINING** MESH  
**SUOLA/SOLE** EVA+RUBBER





**MUSA 2.0 VELVET / CHOCOLATE COGNAC**  
CODE\_ 010526160

**TOMAIA/UPPER** VELVET  
**FODERA/LINING** MESH  
**SUOLA/SOLE** EVA+RUBBER



**MUSA 2.0 VELVET / BLUE BURGUNDY**  
CODE\_ 010526165

**TOMAIA/UPPER** VELVET  
**FODERA/LINING** MESH  
**SUOLA/SOLE** EVA+RUBBER





**MUSA 2.0 SUEDE / LIGHT BEIGE**  
CODE\_ 010526170

**TOMAIA/UPPER** SUEDE  
**FODERA/LINING** MESH  
**SUOLA/SOLE** EVA+RUBBER



**MUSA 2.0 SUEDE / OLIVE GREEN**  
CODE\_ 010526175

**TOMAIA/UPPER** SUEDE  
**FODERA/LINING** MESH  
**SUOLA/SOLE** EVA+RUBBER





**MUSA 2.0 SUEDE / CHOCOLATE**  
CODE\_ 010526180

**TOMAIA/UPPER** SUEDE  
**FODERA/LINING** MESH  
**SUOLA/SOLE** EVA+RUBBER



**MUSA 2.0 SUEDE / ANTHRACITE**  
CODE\_ 010526185

**TOMAIA/UPPER** SUEDE  
**FODERA/LINING** MESH  
**SUOLA/SOLE** EVA+RUBBER





**MUSA 2.0 SHEARLING / LIGHT BEIGE**  
CODE\_ 010526190

**TOMAIA/UPPER** SUEDE  
**FODERA/LINING** SHEARLING  
**SUOLA/SOLE** EVA+RUBBER



**MUSA 2.0 SHEARLING / SAGE GREEN**  
CODE\_ 010526195

**TOMAIA/UPPER** SUEDE  
**FODERA/LINING** SHEARLING  
**SUOLA/SOLE** EVA+RUBBER





**MUSA 2.0 SHEARLING / COGNAC**  
CODE\_ 010526200

- TOMAIA/UPPER** SUEDE
- FODERA/LINING** SHEARLING
- SUOLA/SOLE** EVA+RUBBER





#MOD 4

**SANDWICH MID**



**SANDWICH MID / BLUE**  
CODE\_ 010526205

**TOMAIA/UPPER** FULL REGENERATED LEATHER

**FODERA/LINING** MESH

**SUOLA/SOLE** EVA+RUBBER



**SANDWICH MID / OLIVE GREEN**  
CODE\_ 010526210

**TOMAIA/UPPER** FULL REGENERATED LEATHER

**FODERA/LINING** MESH

**SUOLA/SOLE** EVA+RUBBER





**SANDWICH MID / LIGHT BEIGE**  
CODE\_ 010526215

**TOMAIA/UPPER** FULL REGENERATED LEATHER

**FODERA/LINING** MESH

**SUOLA/SOLE** EVA+RUBBER



**SANDWICH MID / CHOCOLATE**  
CODE\_ 010526220

**TOMAIA/UPPER** FULL REGENERATED LEATHER

**FODERA/LINING** MESH

**SUOLA/SOLE** EVA+RUBBER





#MOD 5

**SANDWICH LOW**



**SANDWICH LOW / BLUE**

CODE\_ 010526225

**TOMAIA/UPPER** FULL REGENERATED LEATHER

**FODERA/LINING** MESH

**SUOLA/SOLE** EVA+RUBBER



**SANDWICH LOW / LIGHT BEIGE**

CODE\_ 010526230

**TOMAIA/UPPER** FULL REGENERATED LEATHER

**FODERA/LINING** MESH

**SUOLA/SOLE** EVA+RUBBER





**SANDWICH LOW / CHOCOLATE**  
CODE\_ 010526235

**TOMAIA/UPPER** FULL REGENERATED LEATHER

**FODERA/LINING** MESH

**SUOLA/SOLE** EVA+RUBBER



**SANDWICH LOW / OLIVE GREEN**  
CODE\_ 010526240

**TOMAIA/UPPER** FULL REGENERATED LEATHER

**FODERA/LINING** MESH

**SUOLA/SOLE** EVA+RUBBER





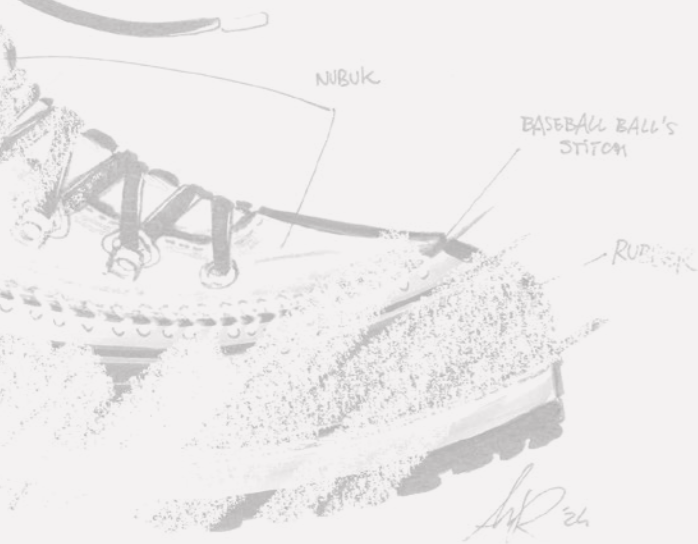
**SANDWICH LOW / DARK PINK**  
CODE\_ 010526245

**TOMAIA/UPPER** FULL REGENERATED LEATHER

**FODERA/LINING** MESH

**SUOLA/SOLE** EVA+RUBBER





## DAL 1911

La storia del calzaturificio Brixia si sviluppa lungo oltre un secolo e, insieme alle sue tradizioni, è strettamente intrecciata a due elementi: la città di Brescia e le tappe fondamentali dell'alpinismo.

La produzione di calzature sportive per la montagna ebbe inizio nel 1911, nello storico stabilimento di Sant'Eufemia, a Brescia.

Brixia dimostrò fin da subito grande lungimiranza, puntando all'eccellenza sin dagli esordi. Si avvale infatti di importanti collaborazioni per i test e la consulenza tecnica: basti pensare a Riccardo Cassin, Carlo Mauri e Cesare Maestri, tre alpinisti di fama mondiale e di indiscussa esperienza, che hanno scritto la storia della disciplina nel Novecento.

L'azienda crebbe di pari passo con le imprese dell'alpinismo: con l'ingresso in scena di Giovanni Rusconi, la portata delle sue straordinarie imprese rese necessario un grande sforzo innovativo nella ricerca, nei materiali e nelle tecnologie, al fine di realizzare calzature con elevati standard di isolamento termico e impermeabilità.

Questo stesso impegno, unito alla costante innovazione dei processi produttivi e alle frequenti consulenze tecniche fornite da esperti di altissimo livello, ha permesso a Brixia di conquistare e mantenere nel tempo una posizione di assoluto vertice nel settore.

## SINCE 1911

The history of the Brixia footwear factory spans more than a century and, together with its traditions, is closely intertwined with two key elements: the city of Brescia and the major milestones of mountaineering.

The production of mountain sports footwear began in 1911 at the historic Sant'Eufemia plant in Brescia. From the very beginning, Brixia demonstrated great foresight, striving for excellence from its earliest days. To this end, the company relied on important collaborations for testing and technical consultancy most notably Riccardo Cassin, Carlo Mauri, and Cesare Maestri, three world-renowned mountaineers of unquestionable expertise who helped shape the history of the discipline in the twentieth century.

The company grew alongside the great achievements of mountaineering. With the emergence of Giovanni Rusconi, the scale of his extraordinary feats required a major innovative effort in research, materials, and technologies, in order to create footwear with exceptionally high standards of thermal insulation and waterproofing.

This same commitment, combined with continuous innovation in production processes and frequent technical consultancy from top-level experts, has enabled Brixia to achieve and maintain a position of absolute leadership in the sector over time.



**Brixia is a Trademark of M.G.M. S.p.A.**

Via Trento e Trieste, 112C  
31050 - Cavasagra di Vedelago  
Treviso - Italy

[www.brixia.shoes](http://www.brixia.shoes)



**Brixia is a Trademark of M.G.M. S.p.A.**

Via Trento e Trieste, 112C  
31050 - Cavasagra di Vedelago  
Treviso - Italy

[www.brixia.shoes](http://www.brixia.shoes)